



MAPPERTON

Booking with Mapperton Estate | sam@mapperton.com

ACCOMMODATION AT MAPPERTON HOUSE

Mapperton House has a variety of grand bedrooms with four poster beds and fine antique furniture, as well as recently redecorated double and single rooms. Some of the rooms have views over the gardens. All the beds have modern mattresses and luxurious Egyptian cotton sheets. The bathrooms have been modernised and include either a bath or bath/shower and guests will enjoy specially selected Noble Isle bath and body toiletries. Given the age of the house, not all rooms have en-suite bathrooms, but bathrooms are private to each room.

Rooms are also available in the adjacent Garden Cottage which has a private garden, and our most recently renovated Keeper's Cottage tucked away a little further along the driveway. Retaining the character of the cottages, the rooms have been modernised with comfortable furnishings and antiques.



Julie Montagu in The Chapel Room, Mapperton House

Luxury bath robes and slippers can be made available so guests can move between room and bathroom in comfort and privacy. There are no TVs in the bedrooms but the house has good WiFi, though in common with many other rural locations it may not have the same broadband speed you may be used to. Hairdryers are provided in each room.

Mapperton is an historic house with period features which give it tremendous character but mean that it lacks some of the facilities of a modern hotel. There is no lift to the upper levels. There are some steep staircases, creaking floorboards and unusual bathroom fittings which all add to the experience! The Cellar offers a cinema space, a place for restorative yoga, games room and gym equipment.

The Great Chamber



The Great Chamber is Mapperton House's finest accommodation suite and one of its three grand heritage rooms. A traditional 4-poster double bed is just one of the many original furniture pieces in this room which lie beneath the magnificent 1540 Tudor ceiling. A large ensuite bath adjoins the room.

The Chapel Room



The Chapel Room is adorned with rich furnishings and includes a double 4-poster bed.



A newly refurbished ensuite bathroom with views across the front of the House brings added luxury to this fine historic room.

The Tudor Room

The Tudor Room, another of Mapperton's heritage rooms, is a single-occupancy room with a 4-poster single bed. Beautifully decorated with delicate pieces of traditional furniture, it provides a calming place to rest.



Though not ensuite, the room is accompanied with a private bath/shower and separate toilet across the hall.

The Victorian Room

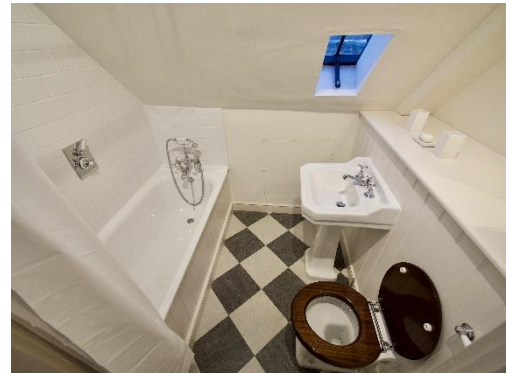
Although modernised, this double room is adorned with Victorian furniture and has a private bathroom with bath, providing a relaxing space to soak away the day's activity. With beautiful views across the garden, it is located up a steep flight of stairs from the first floor into the attic, so guests need to bear this in mind when booking this room. The room can be set as a double or twin depending on requirements.



The Garden Room



Located on the same higher floor as The Victorian Room and enjoying the garden views, this room is a twin with single beds and has a private shower-bath.



Access to the room is by a steep flight of stairs from the first floor into the attic, so guests need to bear this in mind when booking this room.

The Olive Room

In the East Wing of the House, this room has been modernised and can be set up as either a double or twin, depending on needs. It is furnished in soft green tones, hence the name, and has a bright ensuite bathroom with large window.



The double-aspect windows give this room a bright airy feel.

The Persian Room

This room is aptly named for its rich reds and deep mahogany and oak furnishings which give it a warm cosy feel, enhanced by the Persian floor rug. The room can be set up as a twin or double, depending on needs, and has an ensuite modern bathroom.



The Ochre Room & Beetle Room

These adjacent single bedrooms are cosy, yet comfortable. Though not ensuite, they share a private use bath and separate toilet across the hall. The luxury bathrobes (if requested) will make guests feel comfortable moving from room to bathroom.



Mapperton Garden Cottage

The Garden Cottage sits just 50 yards from the main House and gives you the added benefit of a private garden and 'self-contained' facilities. With a fully-fitted kitchen, lounge and dining room with open fire, guests have their own space to enjoy without being far from the 'hub' of the House itself.

The Cottage offers comfort with modern furnishings and bathrooms. With two double rooms and a single room and two full bathrooms, this would suit a family or group of friends.



The Garden Cottage, Mapperton Estate



The Cottage Lounge, Mapperton Estate



The Cottage kitchen and dining area, Mapperton Estate



The Cottage double rooms, Mapperton Estate

Keeper's Cottage at Mapperton

Renovation of the Keeper's Cottage was completed by early 2024 with the support of our Mapperton Patrons. Nestled by a small wood that is bursting with snowdrops then bluebells in Spring, the cottage sits about 200 yards from the main House a little further along the drive.

The cottage has the added benefit of a private garden with decked area where guests can enjoy morning coffee or alfresco dining on a warm evening. The 'self-contained' facilities include a fully-fitted kitchen, lounge and dining room, so guests have their own space to enjoy without being far from the 'hub' of the House itself.

The Cottage offers comfort with modern furnishings and bathrooms. With two double rooms and two full bathrooms, this would suit a family or group of friends.



Keeper's Cottage, double bedroom, lounge and kitchen, Mapperton Estate